

## Morphology of *Toxoplasma* Tachyzoites in the Brain of an AIDS Patient

Shinkichi AKAO and Yayoi ICHIKI

Department of Parasitology, National Defense Medical College, Japan

It is known that chronic *Toxoplasma* infections can relapse and cause acute disease following the immunosuppressive effects of AIDS.

*T. gondii* tachyzoites were detected within brain cells or extracellularly. The cell wall of

the tachyzoites appeared thickened, and 2 or 3 micropyles were observed. In addition the number of rophtries and micronemes in the parasite was less than seen in ordinary tachyzoites. (Fig. 1, 2)

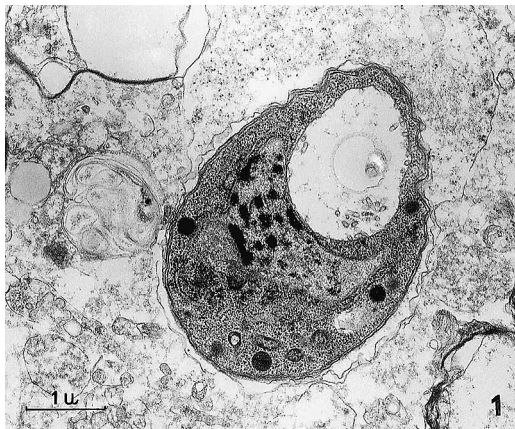


Fig. 1



Fig. 2